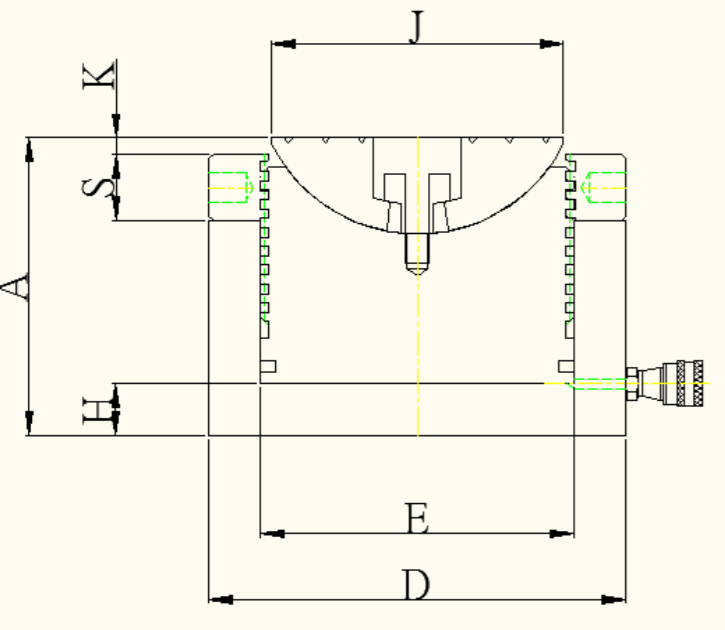
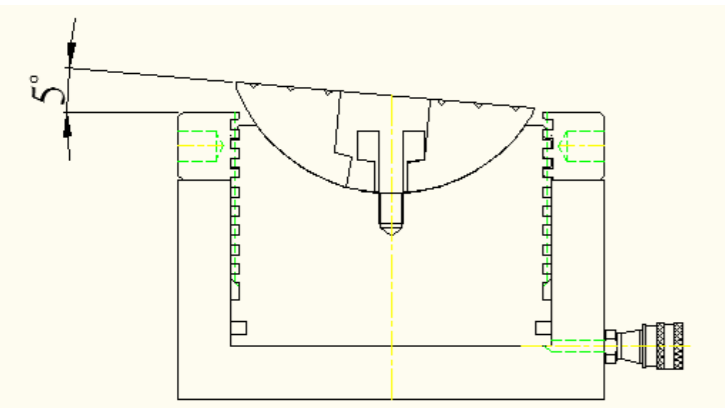
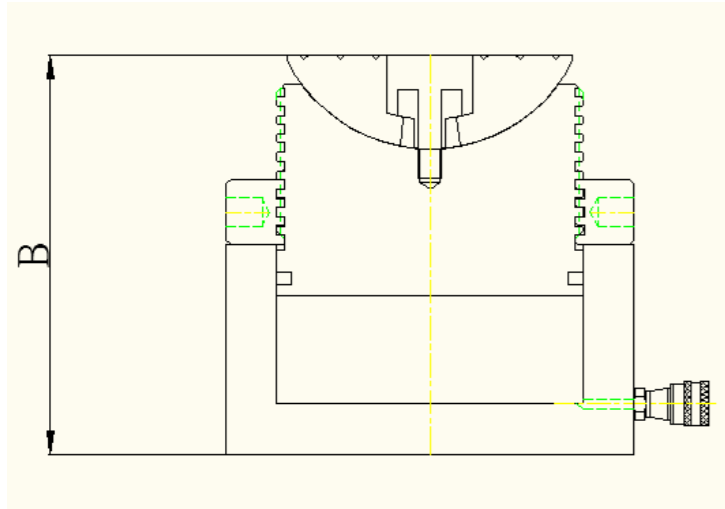


扁平單動螺紋千斤頂



Capacity	Stroke	Model No.	Piston Area	Oil Volume	Collapsed	Extended	Cylinder Dia.	Bore Dia.	Plunger Spec.	Port Height	Saddle Dia.	Clearance	Lock Nut Height	Tilt Angle	Weight
					Heigh	Height						Between Saddle and Lock Nut			
Ton	mm		cm ²	cm ³	A mm	B mm	D mm	E mm		H mm	J mm	K mm	S mm	7 mm	kg
60	50	FSLT-602	86.6	433	135	185	145	105	105×P8	20	95	7	28	5°	18
	75	FSLT-603	86.6	649	165	240	145	105	105×P8	20	95	7	28	5°	22
100	50	FSLT-1002	143.1	716	142	192	165	135	135×P8	23	125	8	31	5°	24
	75	FSLT-1003	143.1	1074	172	247	165	135	135×P8	23	125	8	31	5°	29
150	50	FSLT-1502	227	1135	159	209	225	170	170×P10	30	160	9	40	5°	50
	75	FSLT-1503	227	1702	189	264	225	170	170×P10	30	160	9	40	5°	59
200	50	FSLT-2002	298.6	1493	165	215	260	195	195×P10	32	180	10	43	5°	69
	75	FSLT-2003	298.6	2240	195	270	260	195	195×P10	32	180	10	43	5°	80
250	50	FSLT-2502	363	1815	171	221	285	215	215×P10	35	200	11	45	5°	85
	75	FSLT-2503	363	2723	201	276	285	215	215×P10	35	200	11	45	5°	100
300	50	FSLT-3002	433.7	2169	179	229	310	235	235×P12	38	220	11	50	5°	105
	75	FSLT-3003	433.7	3253	209	284	310	235	235×P12	38	220	11	50	5°	122
400	50	FSLT-4002	572.6	2863	193	243	360	270	270×P12	42	255	11	60	5°	152
	75	FSLT-4003	572.6	4294	226	301	360	270	270×P12	42	255	11	60	5°	180
500	50	FSLT-5002	730.6	3653	211	261	400	305	305×P12	50	290	11	65	5°	205
	75	FSLT-5003	730.6	5480	241	316	400	305	305×P12	50	290	11	65	5°	235
600	50	FSLT-6002	865.7	4328	222	272	440	332	332×P12	55	315	12	70	5°	260
	75	FSLT-6003	865.7	6493	257	332	440	332	332×P12	55	315	12	70	5°	305
800	50	FSLT-8002	1164.2	5821	255	305	500	385	385×P12	65	370	15	80	5°	390
	75	FSLT-8003	1164.2	8731	285	360	500	385	385×P12	65	370	15	80	5°	435